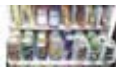




Main Options

Product Range

**DarenthMJS Ltd.**



The SnackBreak MINI is the perfect partner machine to be installed with any one of the entire range of drinks vending machines from the DarenthMJS range, providing a total refreshment solution. It offers users a wide choice of up to 32 selections whilst still retaining a huge capacity yet benefits from an extremely compact size. The SnackBreak MINI is undoubtedly the market leader for providing a total refreshment solution of maximum choice but compact size.

## Machine Features

- Eye-catching and complimentary styling
- Shock absorbent, padded dispense area
- Individual price setting for all products
- Digitally programmable temperature control
- Easy to clean trays with chrome plated spirals
- Slave, coin operated and change-giver variants
- Triple locking points on door for added security
- Fully I-Key cashless payment system compatible
- The perfect partner for a DarenthMJS drinks machine
  - to provide a complete refreshment solution
- Crystal clear lighting system for maximum display impact
- Two double glazed display panels for maximum visibility
- Insulated and refrigerated cabinet with fully automatic defrost
- Fully compatible with the entire range of DarenthMJS table top drinks machines

## Machine Specifications

### Capacity

- 4 trays - max 32 selections
- Crisps tray - 4 selections, 28 products per tray
- Confectionery tray - 8 selections, 88 products per tray
- Optional can tray - 8 selections, 40 products per tray
- Standard configuration - (2 x crisp, 2 x confectionery )= 232 products
- Maximum capacity - (4 x confectionery trays = 32 selections) = 352 products
- Any tray combination available at no additional charge

### Dimensions (WxHxD)

Machine : 784mm x 1000mm x 746mm

### **Weight**

Empty machine : 135Kg

### **Power Requirements**

220-240 V, 50 Hz, single phase

300 W, 13 A plug fuse

Machine fitted with 1.5 metre mains lead and is equipped with power outlet socket for optional hot drinks machine (combination requires only one wall socket)

### **Coin Control**

The machine is designed to complement the entire range of DarenthMJS beverage machines, and in this format operates as a slave to the host machine thereby utilising the same payment system

Alternatively, the machine is equally as capable of operating in a stand alone format and can be fitted with a choice of coin validators (accepting all coins plus token) or equipped with a full change-giving facility

Fully I-Key cashless payment system compatible

### **Temperature Control**

Fully Insulated and refrigerated cabinet

Electronically programmable temperature control

Automatic defrost cycle

Double glazed and thermally insulated display windows

[Home](#) | [News](#) | [Company Profile](#) | [Directions to DarenthMJS](#) | [Contact Us](#)